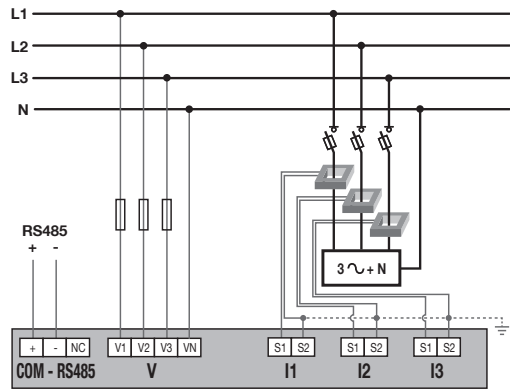
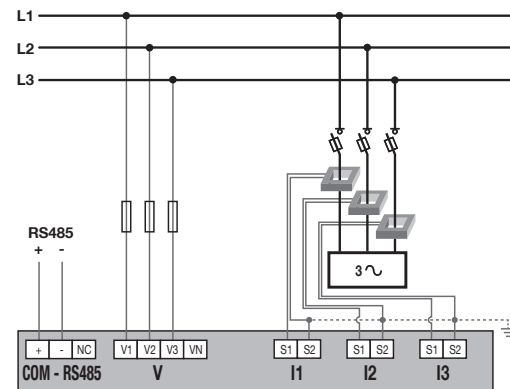


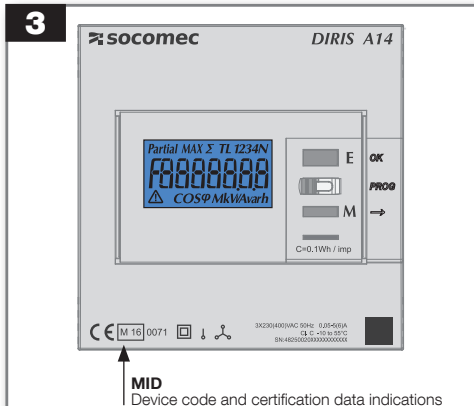
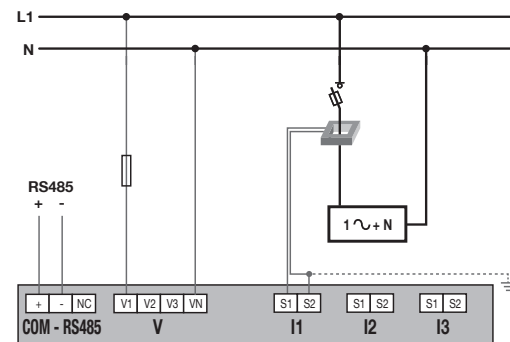
3P+N – 3CT (4NBL)



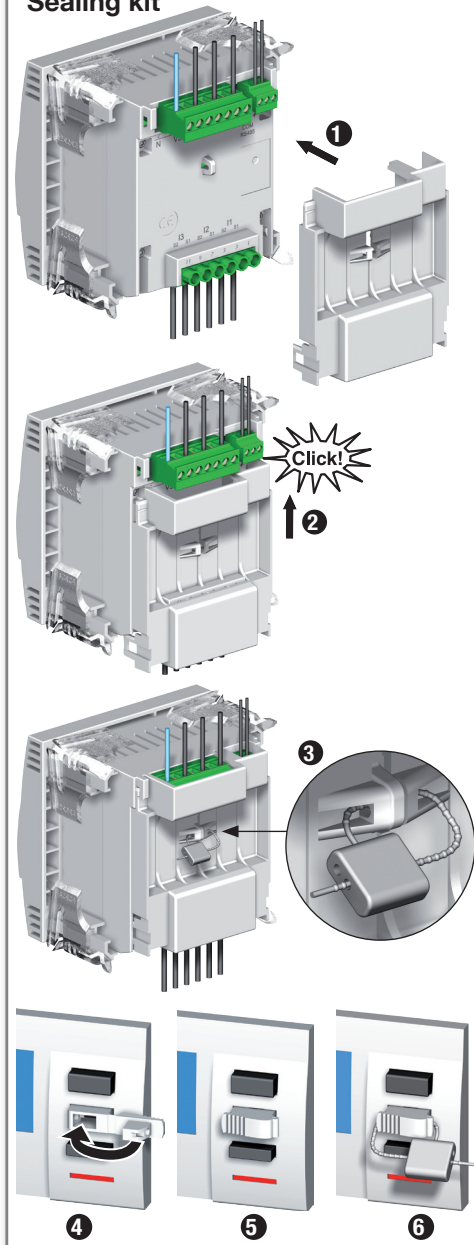
3P – 3CT (3NBL)



1P+N – 1CT (1BL)



Sealing kit



4

Device switch ON → Partial MAX Σ TL 1234N → UEr 103 → [5 3860]

Partial MAX Σ TL 1234N
COSφ MkvVarh

3 sec. PROG

Current transformer
10, 25, ..., 2000, 2500A
OK

Network list
1bL, 2bL, 3bL, 3nbL, 4bL, **4nbl**

Modbus address
1, 2, ... **5**, ..., 253, 254
Add 5

Baud rate
4800, **9600**, 19200, 38400
bd 9600

Parity
no, odd, even
PAR no

Stop bit
1, 2
Stop 1

Reset
Max 41, Max P, Max Q, Max S, Max cosφ, Partial Ea+, Partial Er+, Partial Ea-, Partial Er-
rst 41

3 sec. PROG
= end of programming

Total Ea+
Σ T 1
92.46
kW h

Total Er+
Σ
92.46
k varh

Total Ea-
Σ
92.46
kW h

Total Er-
Σ
92.46
k varh

Partial Ea+
Partial T 1
92.46
kW h

Partial Er+
Partial
92.46
k varh

Partial Ea-
Partial
92.46
kW h

Partial Er-
Partial
92.46
k varh

Instantaneous current per phase (L1, L2, L3, LN)
M L1
123.45
A

Max current per phase (L1, L2, L3, LN)
M MAX L1
20.1
k A

Voltage phase to phase, phase to neutral (L1-2, L2-3, L1-3, L1, L2, L3)
M L12
392.78
V

Frequency
M F
50.03

Instantaneous 3 phases power (Σ):
- active power (kW)
- reactive power (kvar)
- apparent power (kVA)
M Σ
579.23
kW
k var
kVA

Max 3 phases power (MAX Σ):
- active power (kW)
- reactive power (kvar)
- apparent power (kVA)
M MAX Σ
579.23
kW
k var
kVA

Min 3 phases power (- MAX Σ):
- active power (kW)
- reactive power (kvar)
M Σ
579.23
kW
k var

Instantaneous 3 phases cos φ (Σ)
M Σ
0.97

Max 3 phases cos φ (MAX Σ)
COSφ

Min 3 phases cos φ (- MAX Σ)
COSφ